

# CERTIFICATE OF LOCATION OF GOVERNMENT CORNER

NORTHEAST Corner of Section 8, Township 105, Range 41, 5TH P.M.

STATE OF MINNESOTA, County of MURRAY

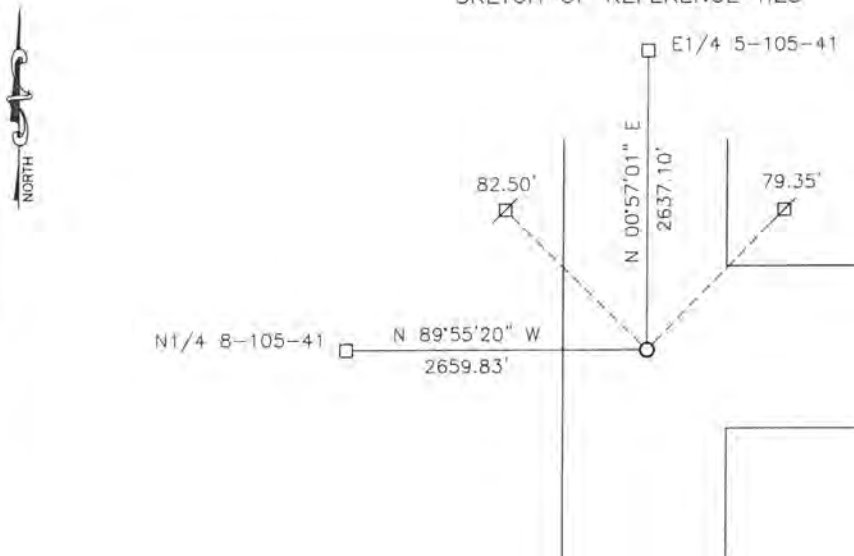
At the corner location shown on the sketch:

On 06-29-2017 found a 1/2" IRON.  
DATE

left monument as found,  lowered monument,  removed monument (explain)

On 06-29-2017 placed a SURVEY SPIKE WITH SEAL #43844.  
DATE

### SKETCH OF REFERENCE TIES



Minnesota State Plane Coordinate System Murray County Datum NAD83 (1996)

N: 126630.674  
E: 495408.556

Nail and bottle cap in utility pole NW 82.50'  
Nail and bottle cap in utility pole NE 79.35'

Statement of evidence relative to this corner location is on back of page.

I hereby certify that this document and the data contained herein was prepared by me or under my direct supervision.

*Paul B. ...* SIGNATURE      2/20/18 DATE

Registration No. 43844

Land Surveyor,     Professional Engineer  
 County Surveyor,    County Engineer

STATE OF MINNESOTA, }  
COUNTY OF MURRAY, } ss.

I hereby certify that the within Instrument was filed in this office for record on the 26<sup>TH</sup> day of MARCH A.D. 20 18 at 9:00 o'clock A. M. and was duly recorded as Document No.           

*Evelyn C. Larson*  
County Recorder

## Statement of Evidence

In 1861, Wellman and Smoot did the original subdivision of the township.

On January 14, 1940, the corner is recorded as a concrete monument.

On October 10, 2005, Zieske Land Surveying found an iron monument at the corner.

On December 17, 2009, Zieske Land Surveying found an iron monument at the corner.

On June 29, 2017, Bueltel-Moseng Land Surveying found an 1/2" iron at the corner. We set a survey spike with seal #43844 at the road surface.